

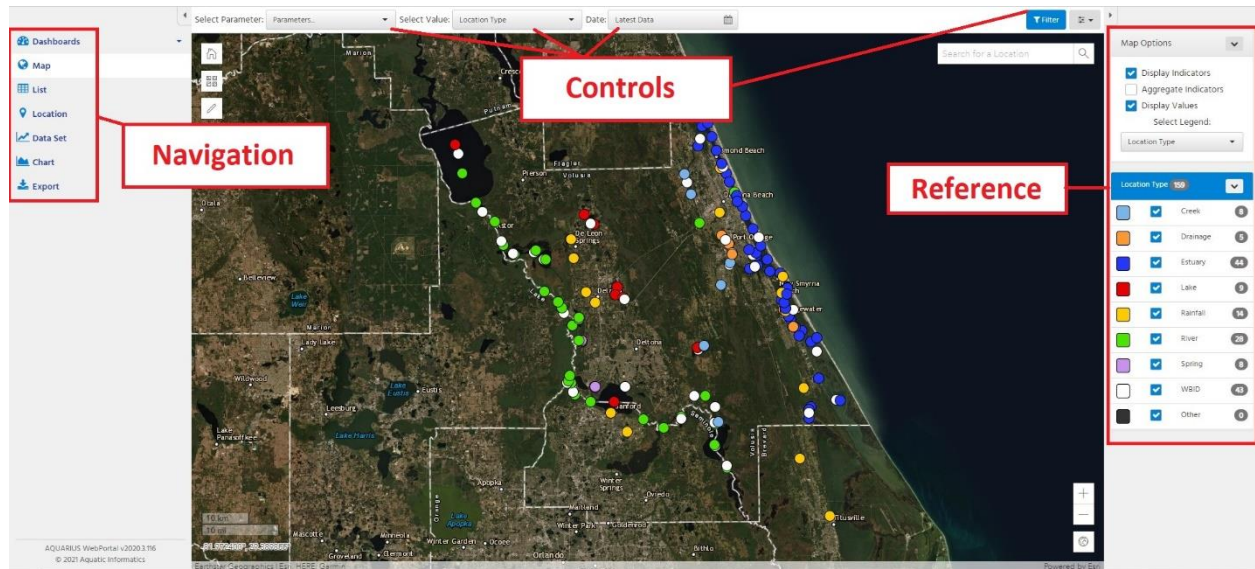
# Getting Started Guide

Welcome to the Volusia County Environmental Management (VCEM) Water Quality Web Portal. This portal allows you to view and download data collected at locations where water quality is monitored by VCEM. This guide will describe how to select station locations and data, display available parameters on a Map, view charts of key parameters for sets of related locations in Dashboards, and explore specific locations and parameters in a Data Set or Chart.

DISCLAIMER: Current data are routinely added to the VCEM database, and subsequent visits may reflect such additions or revisions. VCEM provides no warranty as to the accuracy, reliability, or completeness of these data. Further information can be obtained by contacting VCEM at (386) 736-5927 ext. 12096 or [kyoung@volusia.org](mailto:kyoung@volusia.org).

## Navigation, Controls, and Reference Panels

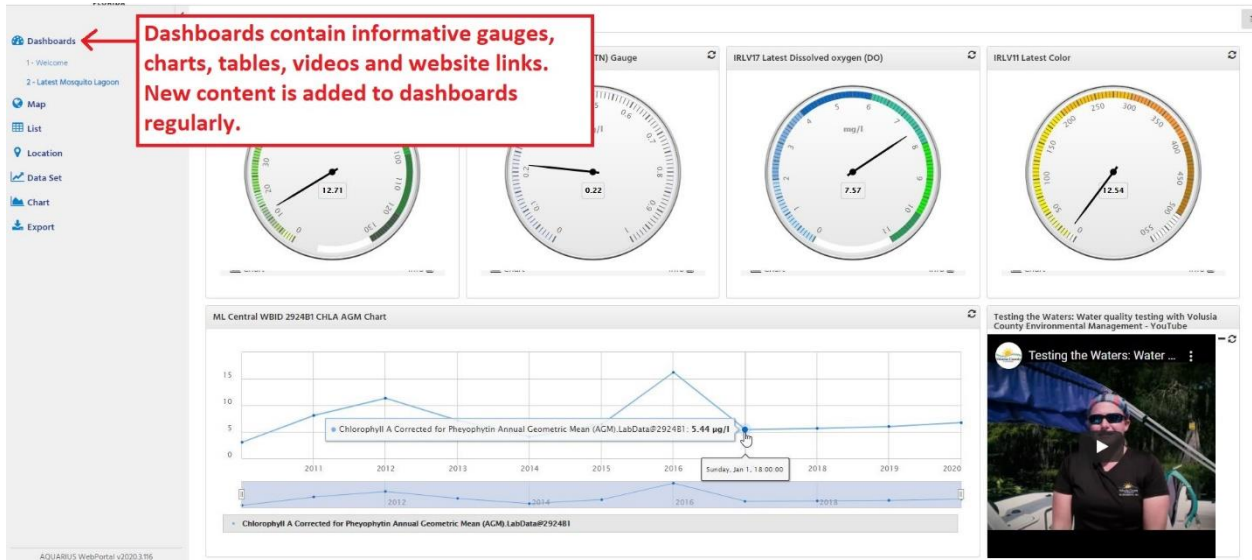
The tabbed navigation menu on the left side of the screen allows you to switch between dashboards, maps, charts, etc. Controls displayed at the top change the type of data (i.e., parameters and values) and how it is being displayed (i.e., ranges of dates), depending on what you selected in the navigation menu. The reference panel on the right contains supplementary information and options relating to what you have selected, such as legends, map/chart options, and information about the data set.



NOTE: The arrows in the top right of the navigation menu and top left of the reference panel hide the panels and provide more space to view charts, maps, and dashboards.

## Dashboards

The dashboard tab, selected from the navigation menu, contains multiple interactive dashboards that are used to display key summary information for projects in the VCEM water quality monitoring program. Please refer to the Data Sets and Charts section of the document for more information on interacting with the charts in the available dashboards.



## Map and Locations

The map tab, selected from the navigation menu, displays values on a map of VCEM monitoring locations. Select the data of interest from the control panel located at the top of the screen.

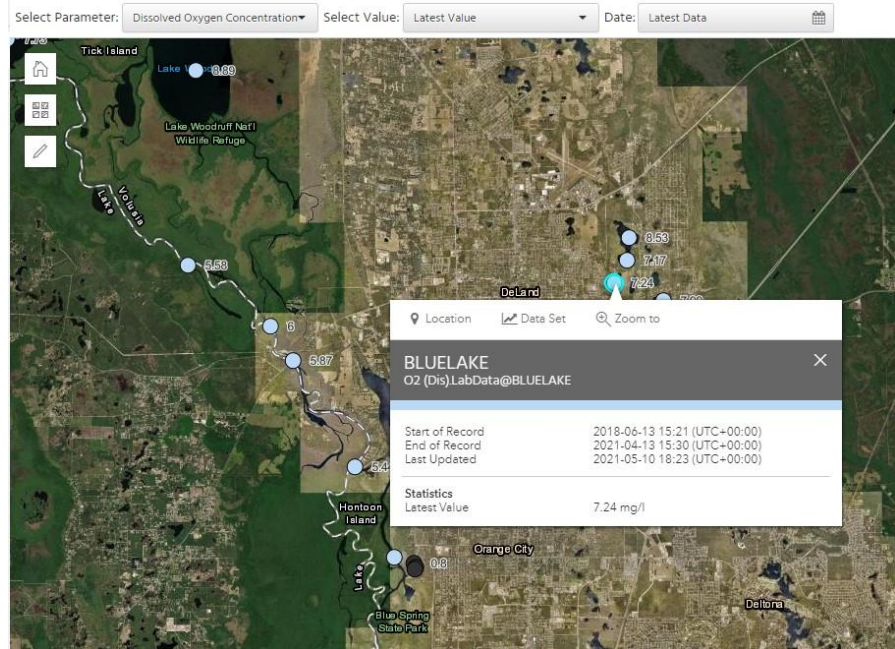



Use the Parameter dropdown menu to select the type of data you want to view. For example: pH or Salinity.

Use the Value dropdown menu to select the statistic you want to view. For example: Maximum or Latest Data.

Use the Date dropdown menu to select the period of time for the data you want to view. For example: Latest data or Annual.

Once you have set each control, indicators on the map will display values related to your selection. Clicking on an indicator will display a pop-up window with summary information for the parameter specified, including the period of record (start and end dates/times) and the date/time of the most recent update. At the bottom of the pop-up window are links for access to information about the location and the data set.



The plus and minus icons in map view are used to zoom in or out, and you can use the  icon for access to tools that let you draw shapes to select multiple locations. Once the locations and data of interest are selected, use the Export tab in the Navigation menu to export data. Sending data to the chart section will create an interactive chart with all of the selected data sets in the same view. You can zoom, change the range of dates being plotted, and configure all available options related to the design of the chart.

The location tab, selected from navigation menu, takes you to information related to the selected location. This summary tab includes coordinates and other metadata for the location. It is followed by a list of the available data sets with dates/times for their starts, ends, and last updates. Use the Go To drop-down menu at the end of each row to display the data in a particular way or to export in Excel or comma separated values (CSV) format.

## Data Sets and Charts

The data set tab, selected from the navigation menu, presents a number of options across the top: summary, chart, grid, statistics, and export. The summary tab displays standard information about the data set (parameter, unit, period of record, etc.). The chart tab displays a fully interactive chart, and the grid tab converts the data into an interactive table. The statistics tab displays a pre-defined set of statistics for the selected range of dates. Finally, data sets can be exported in Excel or CSV format through the export tab.

Clicking on the chart tab yields an interactive chart. Options for changing the display can be found in the bottom right corner, and the resulting image can be exported by going to the options menu in the top right. Sliders to the left and right of a small summary graph on the bottom of the chart allow you to zoom in to particular periods of record. By putting the cursor in the highlighted period of record below the chart, you can pan through different periods of interest by clicking and sliding the highlighted period of record left or right. Hovering the mouse over the line in the chart displays the relevant record. The data shown in the chart can be changed in the date control panel.



The summary tab, just above the chart, reveals information about the location and parameter selected. These metadata include the period of record and date/time of the last update. The grid tab displays the same data as the chart in an interactive table. This table allows the data to be sorted and exported. The statistics tab reveals basic statistics that have been calculated using the data set, such as minimum and maximum values. Statistics have been pre-defined for certain ranges of dates in the date control pull-down menu. The export tab can be used to download the data set for a specified parameter and period of time. Exports can be in either CSV or Excel format.

## Export

The export tab, selected from the Navigation menu, allows you to select and download multiple data sets for multiple locations in either CSV or Excel format. From drop-down lists, select the period of time you want in the date range field and the frequency of data in the interval/points field (e.g. monthly or annually). Choose to export data in either a single file with the relevant dates/times aligned or separate files for each data set. You also can choose to include certain

metadata, such as grade codes (data quality codes), data approval levels, or types of interpolation (e.g. for parameters that involve calculations).

The data sets section allows you to select data sets to be exported. The option to convert units for each data set is available in the conversion option drop-down menu. Click Download at the bottom of the screen to finalize the export process.